

APEX DEAD-WEIGHT PRESSURE GAUGE TESTER

OIL-OPERATED TYPE



Note: Pressure Gauge Shown is not part of the standard Equipment

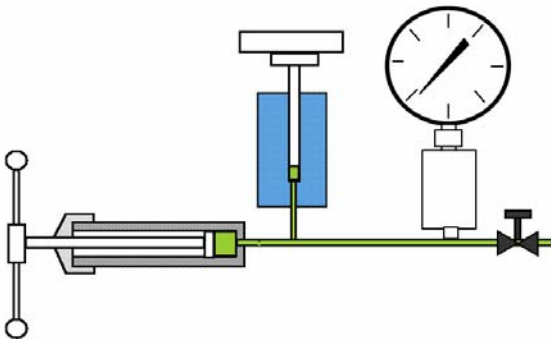
APEX TESTERS ARE SELF CONTAINED AND IN READY TO USE CONDITION

APEX TESTERS ARE ACCURATE AND ROBUST IN CONSTRUCTION, SIMPLE TO OPERATE, LIGHT IN WEIGHT AND EASY TO CARRY TO WORKSITE

APEX TESTERS ARE COST EFFECTIVE

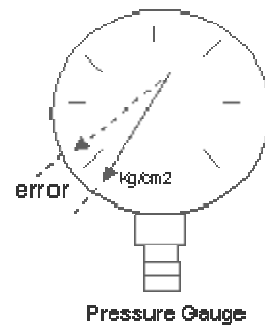
APEX DEAD-WEIGHT PRESSURE GAUGE TESTERS ARE FOR CALIBRATION OF PRESSURE GAUGES & OTHER PRESSURE SENSITIVE INSTRUMENTS OVER A WIDE RANGE OF PRESSURES

THE PRINCIPLE



Pressure is defined as force per unit area. Dead-Weight Pressure Testers use these measurements of force and area to produce a pressure to calibrate instrument with great accuracy. The force is derived from weights and the area is that of a piston in a cylinder. Dead-Weight Pressure Tester is the fundamental standard of pressure measurement for pressure higher than those for which a liquid column can conveniently be used.

THE NEED



It is important that all pressure gauges and other pressure sensitive instruments are periodically calibrated against dead weight testers (being a fundamental method of pressure measurement) for safety, efficiency and quality.

APEX CONTROL INSTRUMENTS

POST BOX No 2104,
DELHI 110007

PHONE: +91-9810019860

FEATURES

APEX Dead-Weight Tester is of robust construction and at the same time extremely accurate. The main components which are listed below are fitted to a sturdy steel base having adjustable levelling screws:

Piston/Cylinder Assembly

Piston made of special steels accurately ground and lapped to size. Cylinder has glass finish bore precisely honed. For models PC/S one piston/cylinder assembly and for models PC/ D two piston/cylinder assemblies are provided.

Weight- Table is attached to piston for supporting weights.

Oil Reservoir

provides a convenient storage for hydraulic fluid that must be added to the system to replace fluid which is lost during the testing processes.

Hand-Operated Pump

is a screw-type positive displacement pump to generate and precisely adjust system pressure, designed for strength, durability and convenience in operation.

Needle Valve

for cutting-off oil-reservoir from high pressure circuit.

Pressure Gauge Post

provides a convenient means for mounting gauges under test with 1/2" BSP (F) gauge connection.

Levelling Screws

four nos. for exact levelling of Tester.

Dead-Weights

set of weights are provided to cover entire range of the tester.

The instrument is supplied complete in all respects and in ready to use condition for the calibration of pressure gauges etc

RANGES AVAILABLE

| Model No. | Single Range |
|------------|--|
| PC/S-1 | 0.2 to 10 KG/CM ² in steps of 0.1 KG/CM ² |
| PC/S-2 | 0.5 to 40 KG/CM ² in steps of 0.25 KG/CM ² |
| PC/S-3 | 1 to 100 KG/CM ² in steps of 0.5 KG/CM ² |
| PC/S-4 | 2.5 to 160 KG/CM ² in steps of 0.5 KG/CM ² |
| PC/S-5 | 5 to 250 KG/CM ² in steps of 1 KG/CM ² |
| PC/S-6 | 10 to 400 KG/CM ² in steps of 2.5 KG/CM ² |
| PC/S-7 | 10 to 600 KG/CM ² in steps of 5 KG/CM ² |
| PC/S-H8[1] | 10 to 1000KG/CM ² in steps of 5 KG/CM ² |

| Model No. | Dual Range |
|-----------|--|
| PC/D-1 | Full Range: 1 to 400 KG/CM ² Low Range: 1 to 40 KG/CM ² in steps of 0.5 KG/CM ² High Range: 40 to 400 KG/CM ² in steps of 5 KG/CM ² |
| PC/D-2 | Full Range: 1 to 600 KG/CM ² Low Range: 1 to 60 KG/CM ² in steps of 0.5 KG/CM ² High Range: 60 to 600 KG/CM ² in steps of 5 KG/CM ² |

N. B. Set of additional weights to give fine increments of pressure are available. Any other Range not covered above can be supplied on request. Also P.S.I. and BAR ranges available.

[1] Model PC/S-H8 has a different design other than shown in the photograph. The Shape and Design are subject to change without notice.

Accessories

- Gauge Adaptors: ¼" & 3/8" B.S.P.(F)
- Pointer Puller
- Pointer Punch
- Bottle of Hydraulic Oil
- Seals for Gauge Adaptors
- Operating Instructions

Optional Extras

- Gauge Adaptors with NPT or any other threads
- Spirit Level
- Dust Cover

Our Other Products

Vacuum Gauge Testers (Dead-Weight type), pneumatic-operated Dead-Weight Pressure Gauge Testers, Oxygen Gauge Oil-seal, Comparison Test Pump, Combined Pressure Vacuum Gauge Tester, Liquid Column Manometers.

APEX CONTROL INSTRUMENTS

POST BOX No 2104,
DELHI 110007

PHONE: +91-9810019860